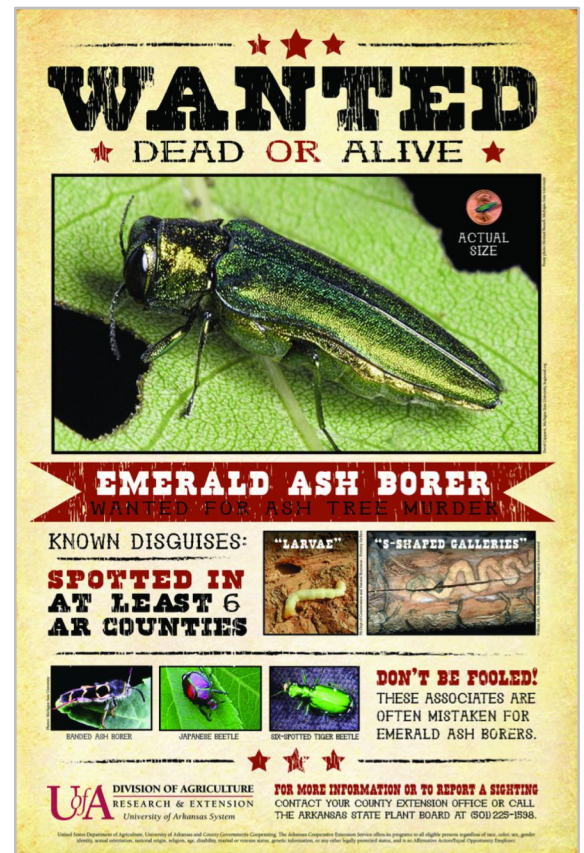


CULTURAL CONTROL STRATEGIES

Cultural control strategies make trees less vulnerable to insects, diseases and environmental threats by meeting plant needs, addressing signs of plant stress and informing the community of tree threats to increase awareness and tree protection.

Examples of cultural controls include:

- Supporting plant health and vigor by adjusting watering practices and schedules to fit seasonal tree needs, fertilizing trees if needed, creating habitats for beneficial insects and correctly planting new trees
- Addressing negative environmental/cultural conditions that stress trees by moving sprinklers that spray trees, removing nearby plant debris to reduce habitat for pest species and painting tree trunks damaged by sun scorch or sunburn
- Engaging the public in tree care and protection by providing flyers about emerging insect threats, providing resources on pest management and providing guidance on correct tree planting and care



Poster alerting people to emerald ash borer appearance and symptoms

Source:

<https://www.dontmovefirewood.org/emerald-ash-borer-awareness-week-toolkit/ar-eab-wanted-poster/>